

Anterior subcapsular cataract

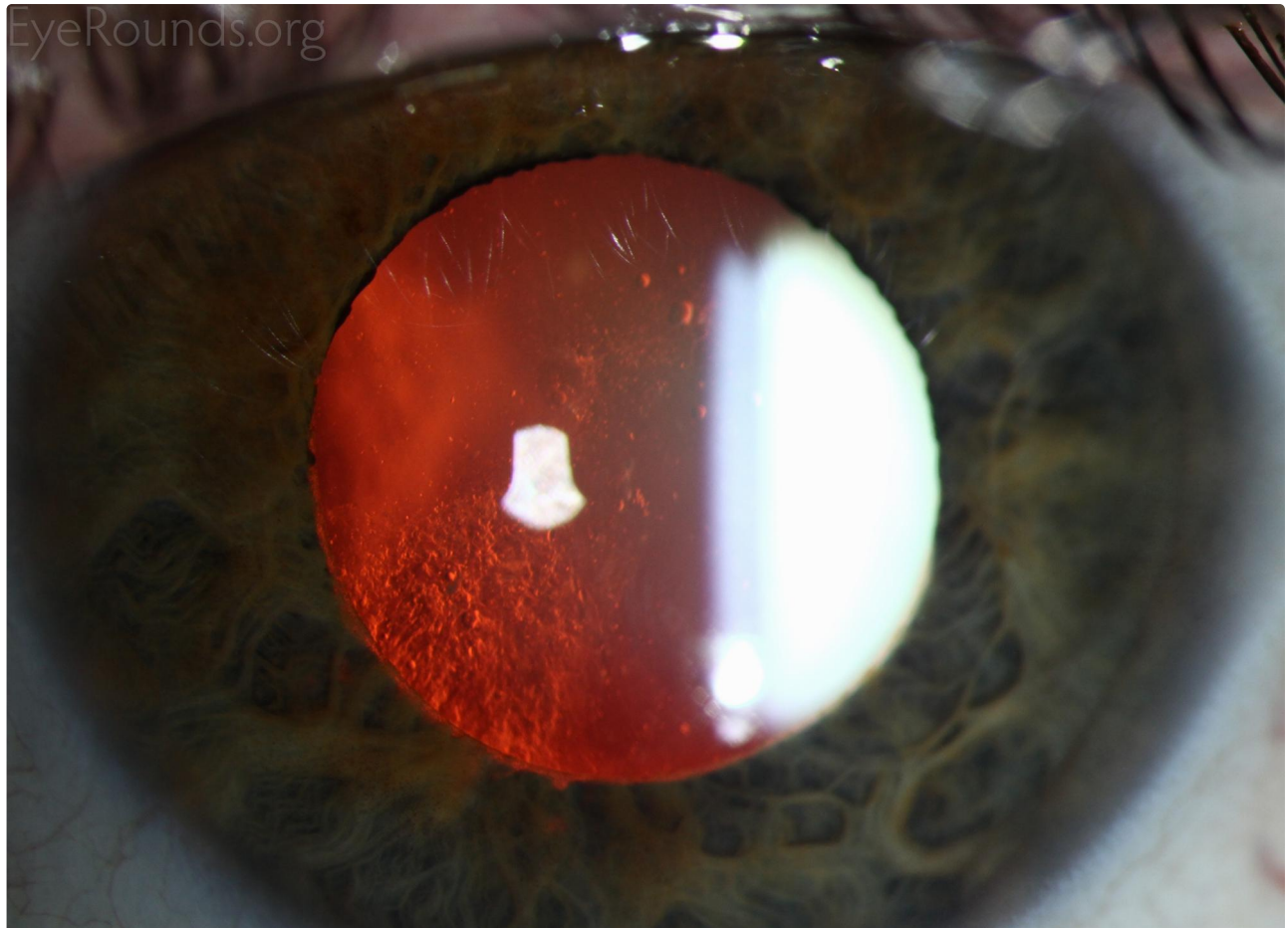
Category(ies): [Cataract](#), [Lens](#)

Contributor: [Hanna Beebe, MD](#)

Photographer: [Brice Critser, CRA](#)

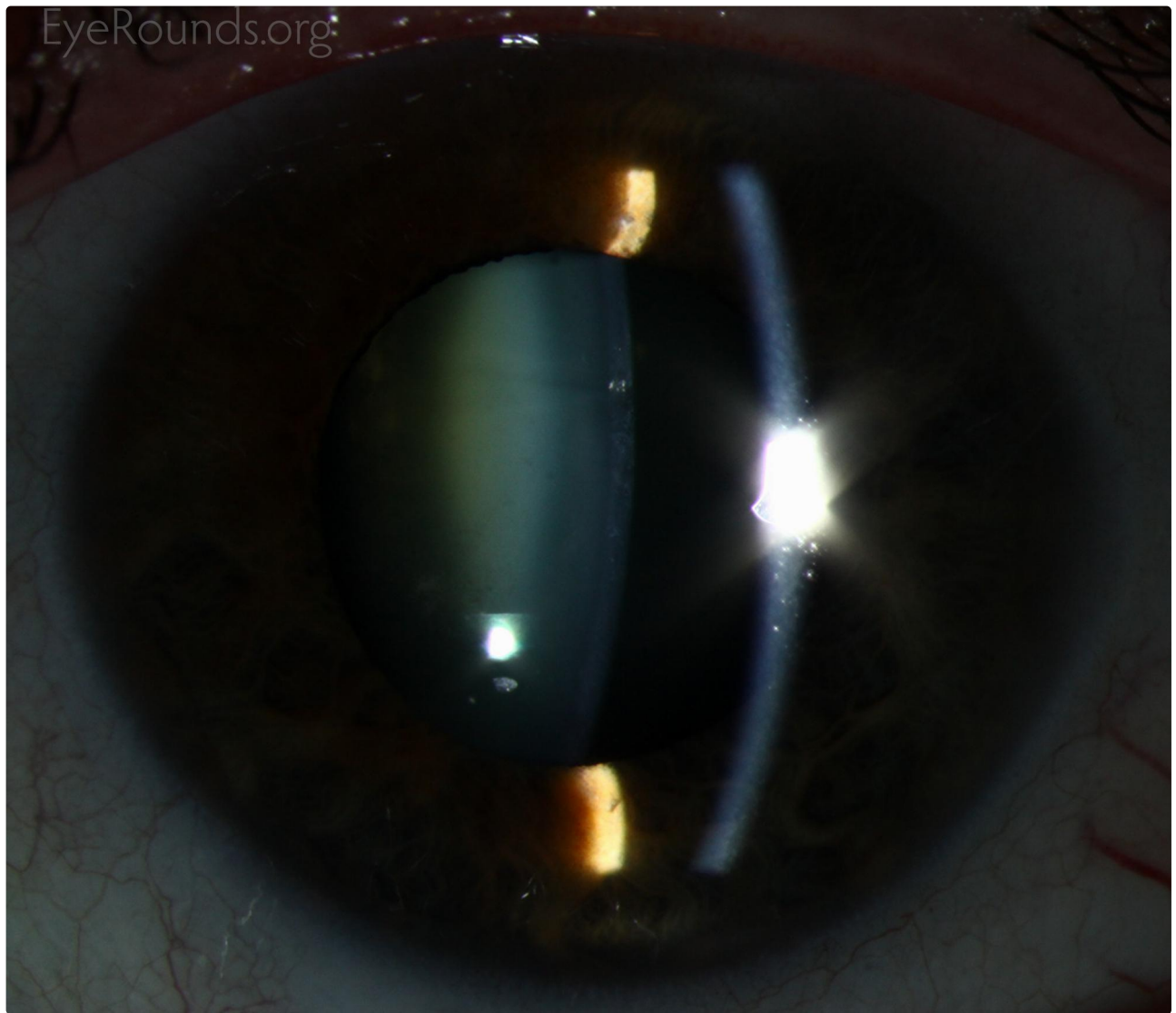


Anterior subcapsular cataracts (ASC) form after anterior lens epithelial cells become necrotic from a variety of causes including iritis, keratitis, inflammation associated with atopic dermatitis, irradiation, or electrical burns. The opacification of the lens is due to a migration of adjacent epithelial cells into the damaged area and subsequent transformation of these cells into a plaque of multiple layers of myofibroblasts. The most posterior layer of these cells remain epithelial cells and will produce a new lens capsule. Over time the myofibroblasts resolve leaving a wrinkled appearance to the lens capsule. A duplication cataract occurs when a cortical cataract develops in the same area as the ASC.



[Enlarge](#)

[Download](#)



[Enlarge](#) [Download](#)

Image Permissions:



Ophthalmic Atlas Images by EyeRounds.org, The University of Iowa are licensed under a [Creative Commons Attribution-NonCommercial-NoDerivs 3.0 Unported License](http://creativecommons.org/licenses/by-nc-nd/3.0/).

Address

University of Iowa
Roy J. and Lucille A. Carver College
of Medicine
Department of Ophthalmology and
Visual Sciences
200 Hawkins Drive
Iowa City, IA 52242

[Support Us](#)

Legal

Copyright © 2019 The University of
Iowa. All Rights Reserved
[Report an issue with this page](#)
[Web Privacy Policy](#) |
[Nondiscrimination Statement](#)

Related Links

[Cataract Surgery for Greenhorns](#)
[EyeTransillumination](#)
[Gonioscopy.org](#)
[Iowa Glaucoma Curriculum](#)
[Iowa Wet Lab](#)
[Patient Information](#)
[Stone Rounds](#)
[The Best Hits Bookshelf](#)

EyeRounds Social Media

Follow



Receive notification of new cases,
[sign up here](#)
[Contact Us](#)
[Submit a Suggestion](#)